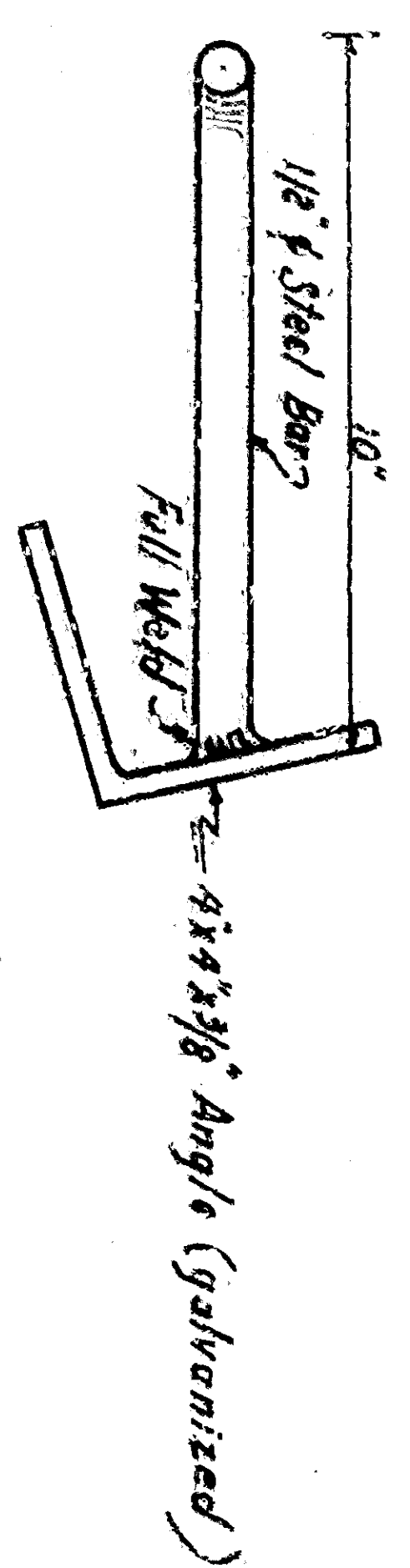
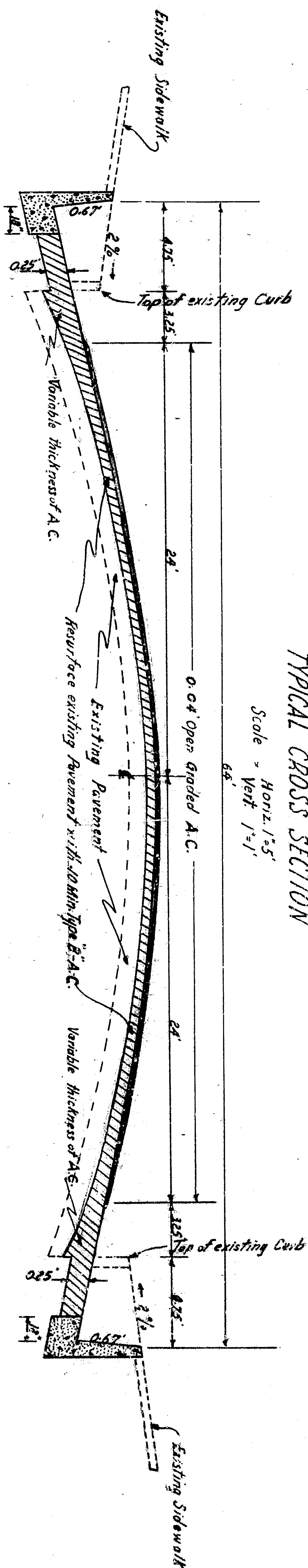


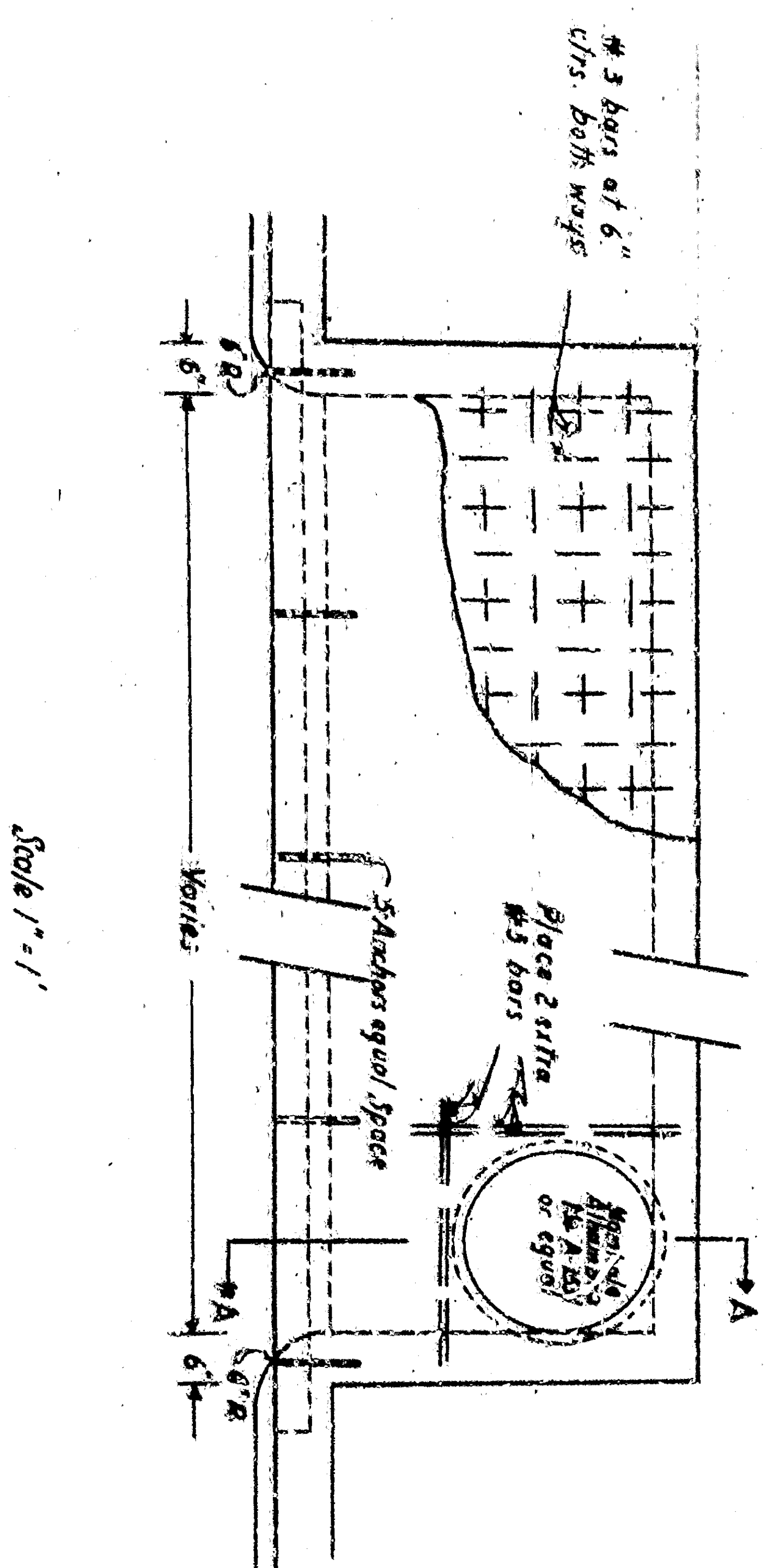
ANCHOR DETAIL



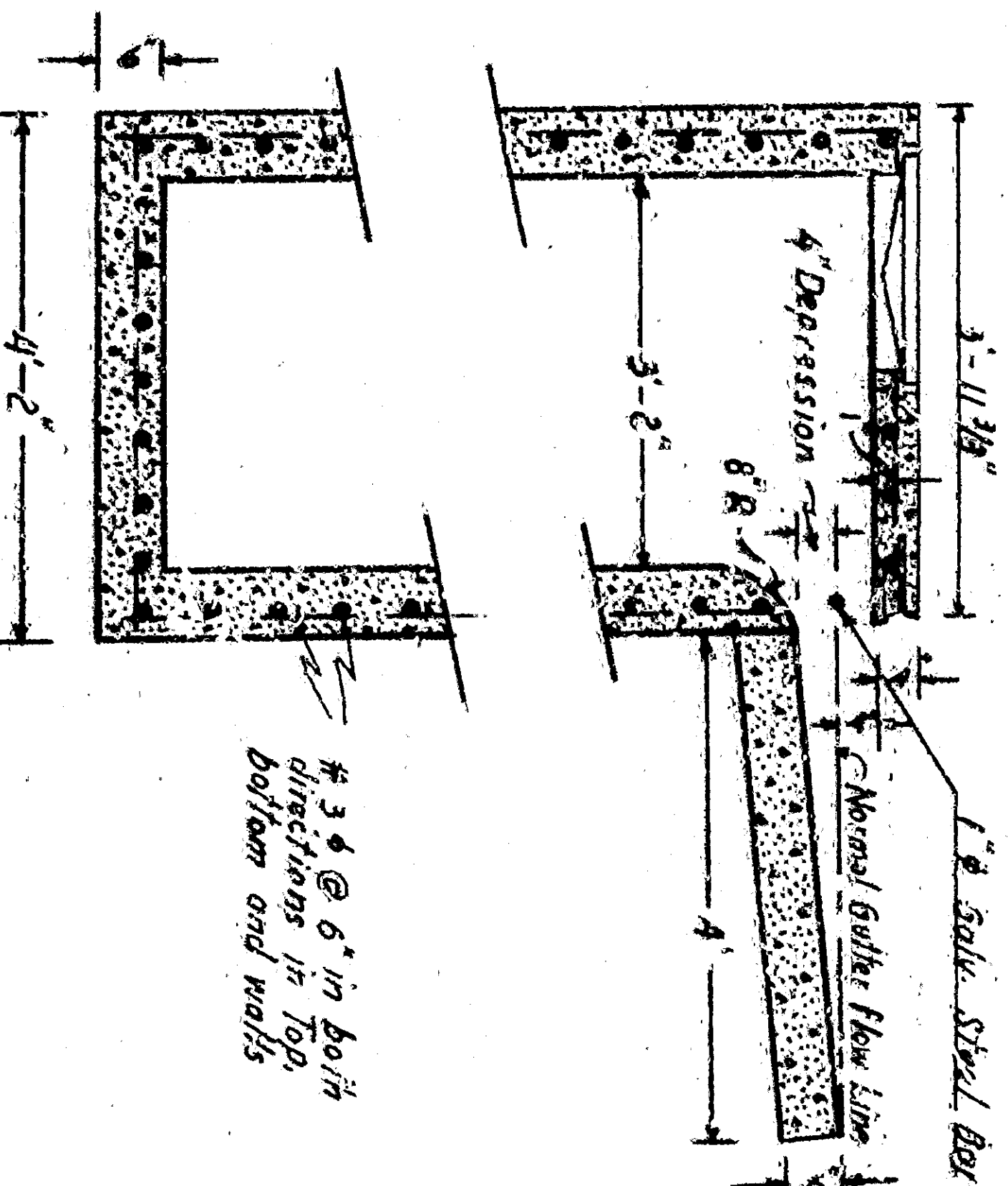
TYPICAL CROSS SECTION



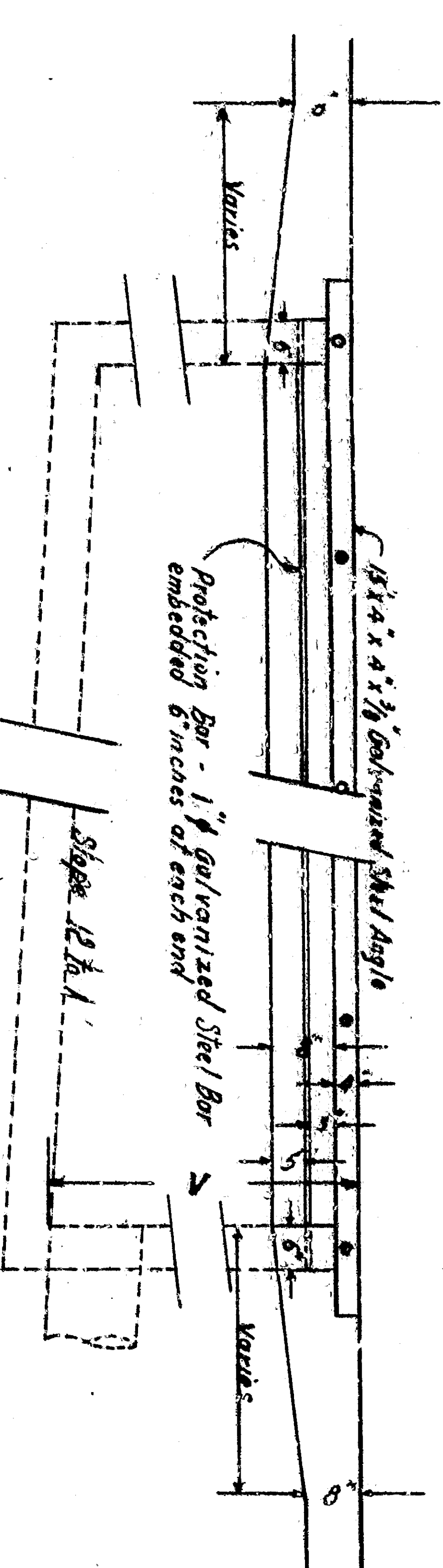
CATCH BASIN DETAIL



SECTION A-A

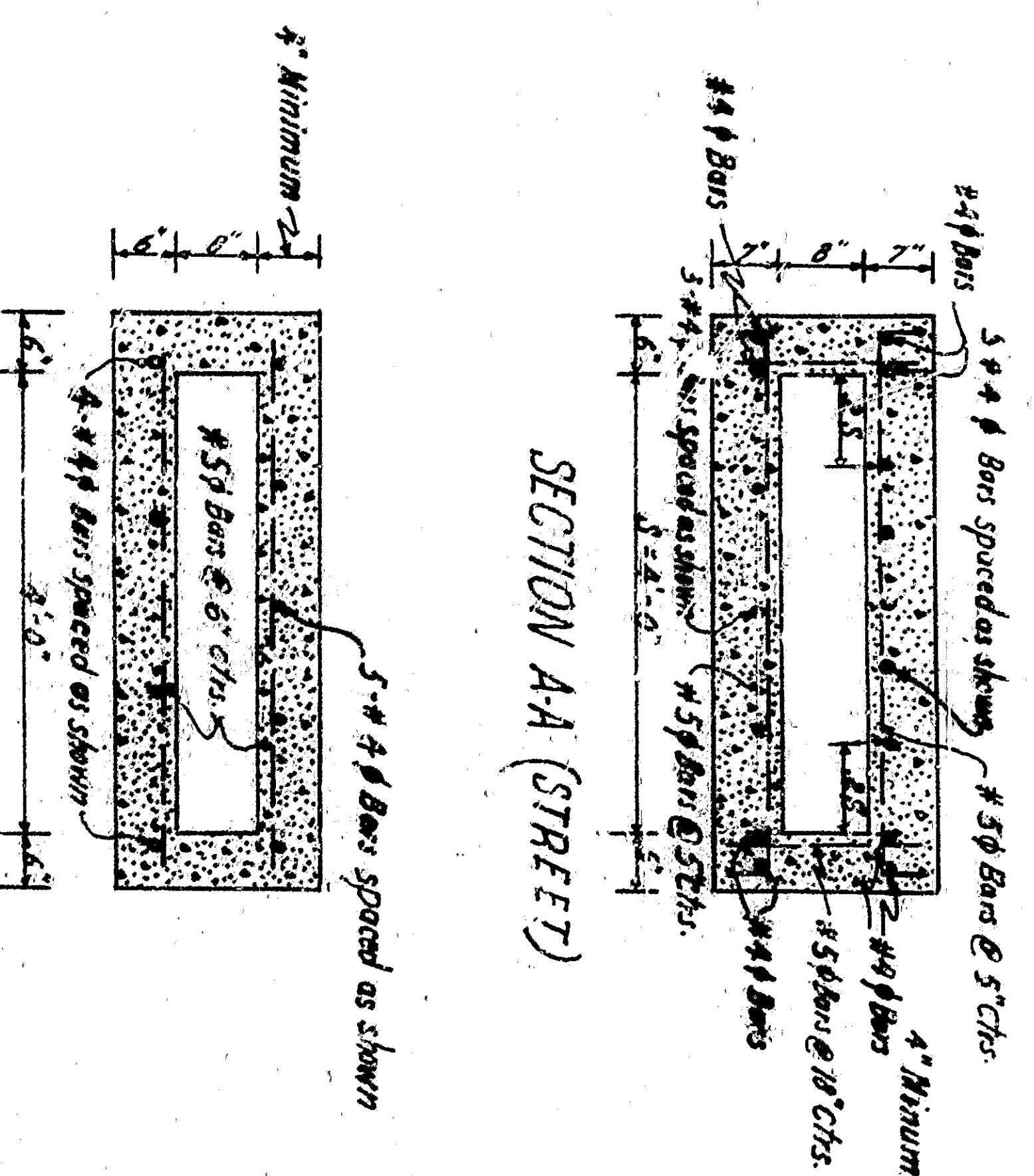


Northwest Corner of Base Line and N. St. V = 4.82°
 Northeast Corner of Base Line and G. St. V = 4.85°

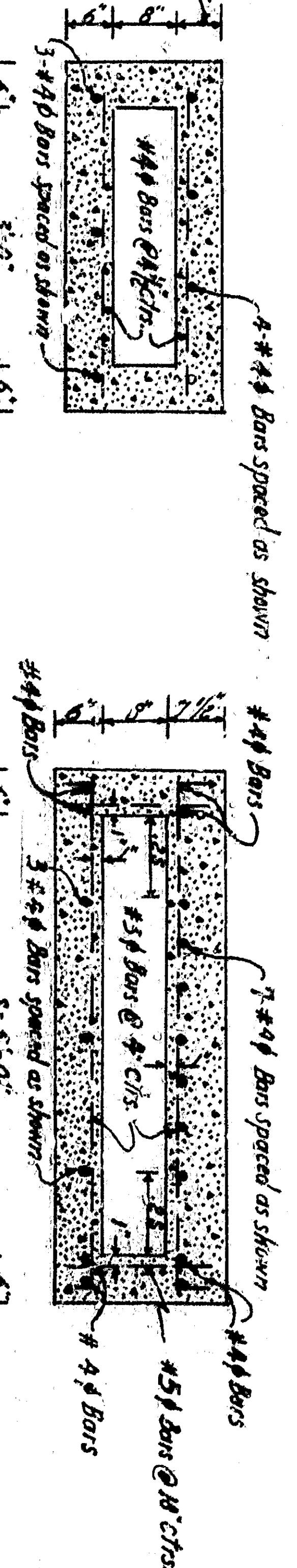


DETAIL OF SUPPORT

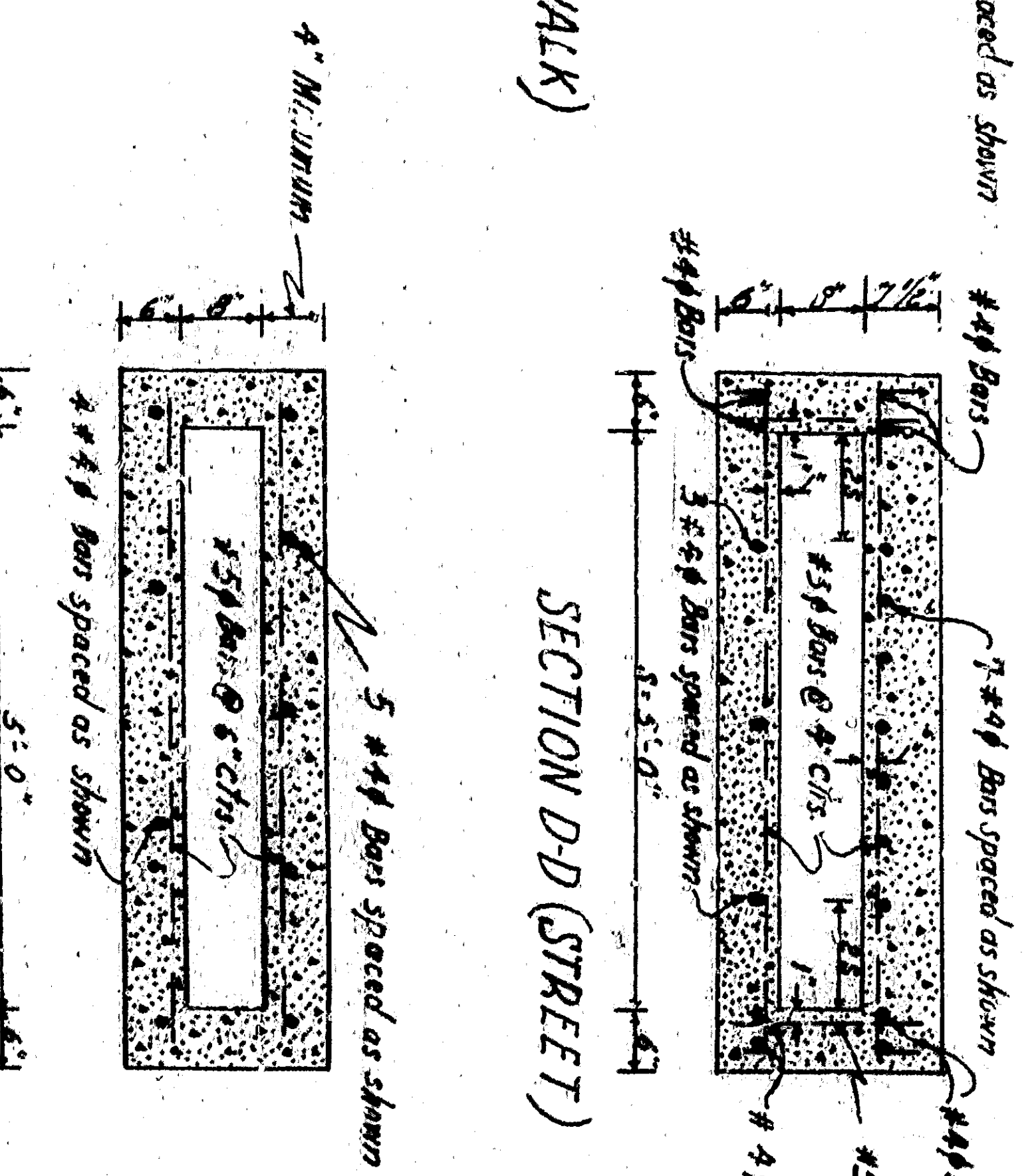
SECTION A-A (STREET)



SECTION C-C (SIDEWALK)



SECTION E-E (SIDEWALK)



TYPICAL CROSS SECTION - DRAINAGE DETAIL
 DEPARTMENT OF ENGINEERS
 CITY OF SAN BERNARDINO
 BASE LINE STREET
 Between H. Street and Western Avenue
 Working

DRAWING NO. 2765	CHECKED BY [Signature]
SHEET 12 OF 24 SHEETS	RECOMMENDED BY [Signature]
REGISTERED CIVIL ENGINEER NO. 8777	DATE 11/11/24
DRAWN BY [Signature]	APPROVED BY [Signature]